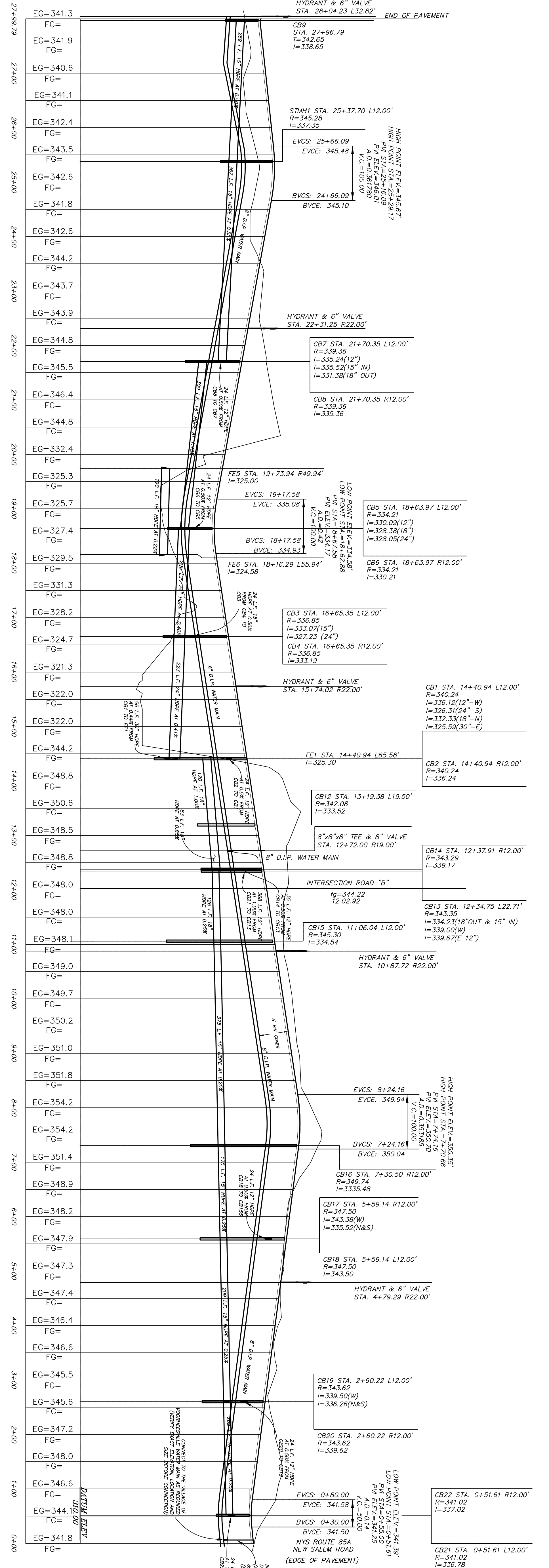


HIGH POINT ELEV = 351.32
 HIGH POINT STA = 17+78.63
 PVI STA = 15+62.53
 A.D. = -7.15
 600.00' VC

ROAD 'A' PROFILE



HIGH POINT ELEV = 350.35
 HIGH POINT STA = 7+70.66
 PVI STA = 4+55.01
 A.D. = 35.55
 100.00' VC

FOR MUNICIPAL APPROVAL ONLY-NOT INTENDED FOR CONSTRUCTION

PRELIMINARY PLAT

ROAD, WATER AND STORM SEWER PROFILES FOR
 COLONIE COUNTRY CLUB ESTATES
 TOWN OF NEW SCOTLAND
 COUNTY OF ALBANY, STATE OF NEW YORK

C7

REVISIONS	REMARKS	DATE
	GENERAL REVISIONS	1/28/08



ALTERNATION OF THIS DOCUMENT EXCEPT BY A LICENSED PROFESSIONAL SURVEYOR IS ILLEGAL.

HERSBERG & HERSBERG
 Consulting Engineers and Land Surveyors
 18 Locust Street
 Albany, New York 12203